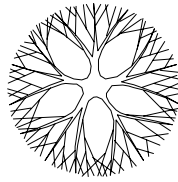


The square footages and room size information are deemed to be reliable but are not guaranteed and should be independently verified. This drawing is for marketing purposes only.

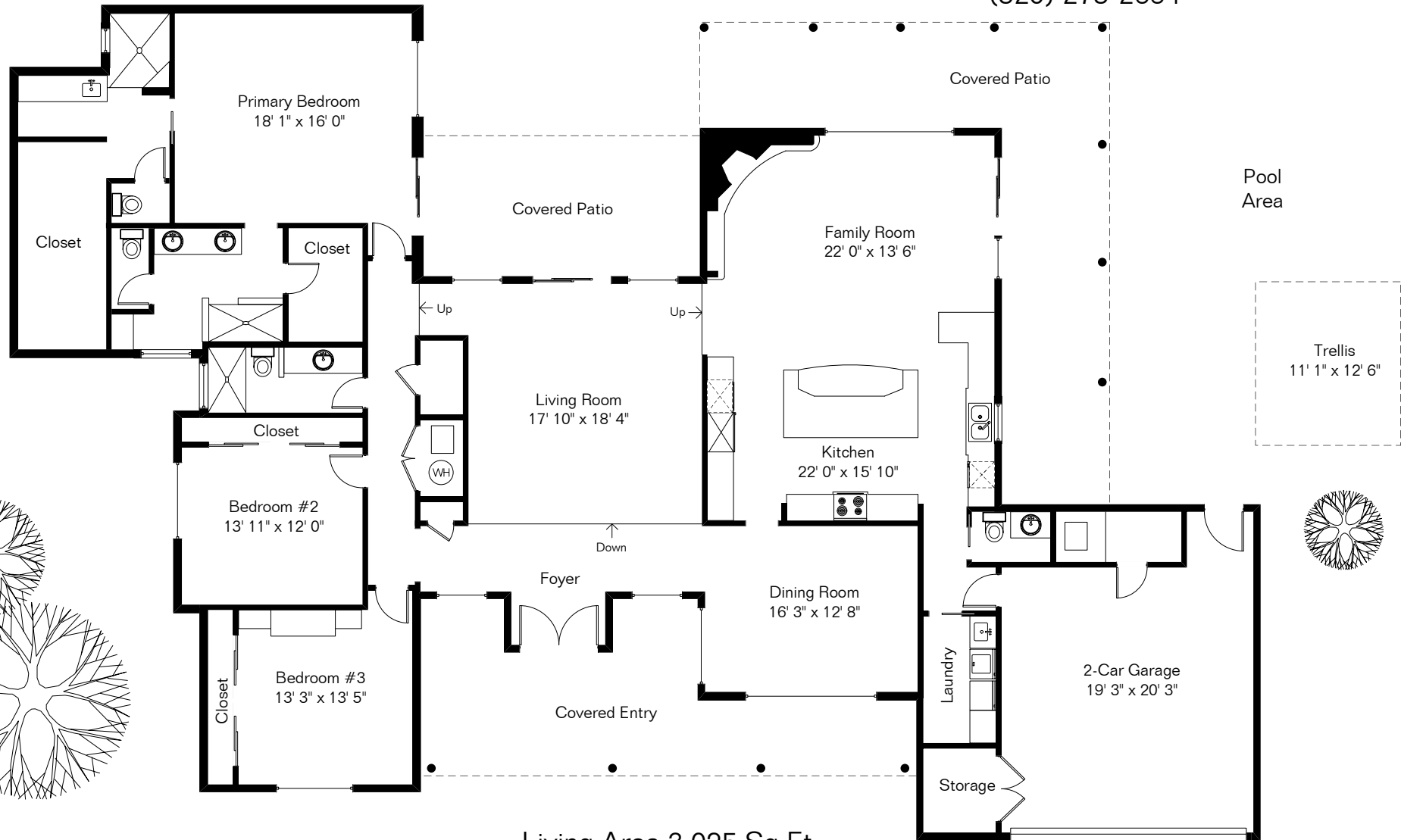


# 9971 N Desert Sky Rd

Presented by Pam Treece

Long Realty Company

(520) 275-2664



Site Visit May 2025

0 ft. 6 ft. 10 ft. 20 ft.



Living Area 3,025 Sq Ft  
Garage 536 Sq Ft  
Covered Porches 1,063 Sq Ft

Copyright 2025 Floor Plans First! LLC  
All Rights Reserved.

Floor Plans First!  
See the Floor Plan First!  
FloorPlansFirst.com  
(520) 881-1500